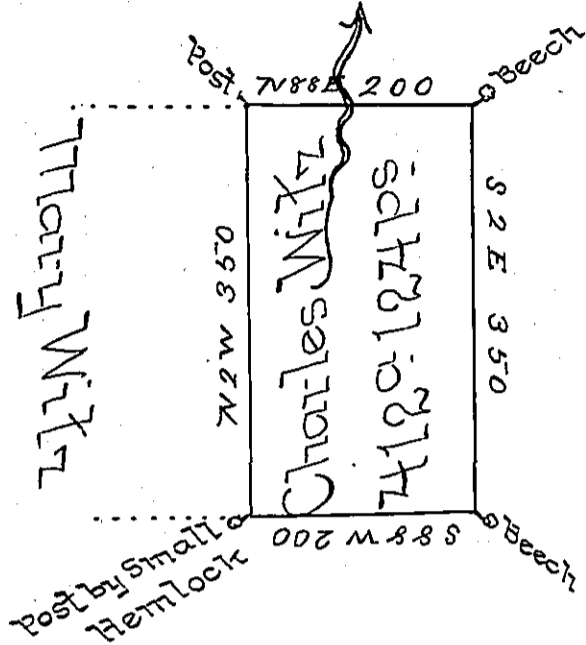


Martha Hochley



Jacob Witz

By Virtue of a Warrant dated 17th August 1793 Surveyed
 6th September 1793 to Charles Witz the above tract of
 Land situate on the Waters of Nappawinny Creek in Luzerne
 County & Containing four hundred and twelve acres and
 one hundred and twenty four Perches and the Allowance
 of Six Percent for Roads &c. -

ARTH. Crothers U.S.

To Daniel Broadhead Esq:
 Surveyor Genl. -

IN TESTIMONY that the above is a copy of the original remaining on file in
 the Department of Internal Affairs of Pennsylvania, made
 conformably to an Act of Assembly approved the 16th day of
 February, 1833, I have hereunto set my Hand and caused
 the Seal of said Department to be affixed at Harrisburg,
 this seventh day of February 1899, -

James W. Latta
 Secretary of Internal Affairs.